

L.E.N.S.

Monthly publication of the
Lake Erie N Scale Society



N-TRAK
N SCALE MODULAR RAILROADING

March, 2005

Welcome!

LENS is a group of people with a common interest in modeling N scale railroads using the “NTRAK” modular concept.

Any time we meet and/or display our work and promote this hobby, we would love to have you join us.

This means that ALL of us have chances to participate in the hobby by helping with any or all of the following:

Setting up/tearing down
Running trains
Sharing your knowledge
Learning something new
Answering questions
Hosting a meeting

Notice that NONE of the above requires a module. We need your help... so bring yourself, your enthusiasm, your interest and your trains.

Thanks in advance for helping! Hopefully, we will continue to see you at the meetings and display events.

Come and join in the fun!

www.geocities.com/lensohio/

The Lake Erie N Scale Society newsletter is published monthly for the sole use of its members by a crew of volunteers.

Opinions published here are solely those of the editor and/or the members of the Lake Erie N Scale Society.

This publication is intended to be a monthly newsletter describing the business, events and the common interest in N scale model railroading enjoyed by the members of the Lake Erie N Scale Society.

For information or questions regarding our Society, you may contact Dennis Lloyd at 440-352-7081 - or - (dlloyd@apk.net)

Meetings normally start at 8:00 p.m., the fourth Friday of each month.

Lake Erie N Scale Society

March 2005

Sound has come to N scale!

Precision Craft Models are now offering N scale models with sound units! Their EMD E7A & E7B units have the correct “bulldog” nose



contour and detailing, as the prototype locomotives appeared in the “as-built” condition. All versions are ready to run and come with magnetic knuckle couplers.

Items 601 to 620 will be fully decorated and have the appropriate number boards. All of them of course will come equipped with the Precision Craft Models exclusive Quantum sound and control unit, which are designed and patented by QSI® and can be operated with either a standard DC power pack as well as DCC controllers. The sound will be as authentic as the rest of the locomotive! Also furnished will be constant intensity directional lighting and lots of added on details plus cab interior detail. A powerful can motor will provide the necessary muscle to pull long strings of varnish!

Prices range from \$63. - \$214. / for undecorated - dummy, to powered & decorated locos with DCC. For more detailed information, see their web site at, www.precisioncraftmodels.com/

Last Month's Meeting

The February meeting was held at the home of Warren L. We started with a tour of Warren's home layout (still under construction). He is making great progress on what promises to be a very interesting display.

We discussed the set up at Lakeland Community College. Final plans for the layout, the sign up sheet and the "Sale table" were all covered. Also, Matt K will send a copy of an Inventory Sheet that must be filled out for any item offered for sale. This will help control what is there, what's been sold and "lowest price" point.

Matt K. gave a brief outline of the upcoming NMRA Regional convention. He also discussed the various layout tours that will be provided by some of our club's members.

Our "sister group", BURNS, will be providing a setup at the Farmpark in May, as many of our members will be involved in the regional convention.

A tape of the Travel Channel's "Made In America" series was shown. The show covered the GE Transportation Rail shops in Erie, PA.

Lou D. brought a video tape from this past summer's convention in Chantilly, VA. Promised were unedited, random shots of the 500+ modules at the record setting layout, with cameo pictures of Jim FitzGerald ("Mr. Ntrak") included. The tape ended abruptly and we thought all was lost. Upon checking later, the other tape (still at home) had what we wanted. This will be shown at a meeting in the near future.

This Month's Meeting

RAILFEST 2005

We have been invited to participate in the NMRA Division 5's Railfest, held at Lakeland Community College (see page 9). Because of the amount of time spent at Railfest, we will not have a "monthly meeting" at anyone's house.

We have a 12' x 48' space to fill with our layout. As of "press" time, ***there is still room*** for 2—4' modules. Again, we will have access to a "Sale Table", where you are welcome to bring your surplus items to offer for sale to the public.

If you intend to offer items for sale, also plan on spending some time sitting at the table to monitor those items; you are expected to contribute to the effort. Also, don't forget to fill out an Inventory Sheet for your items (available from Matt K. via e-mail or phone).

We will need all of the help we can muster for the set up and tear down efforts; please try to be available.

Contact Denny L. if you intend to bring a module so we can include your module/s in the layout design.

If you have never been to a Railfest, it is the "east side's best model railroad show". There will be several operating layouts and over 100 vendors, "waiting to liberate your dollars"!

Learning From Prototype

Welcome to Ohio, the Land of Trains

Take a look at any map of the United States and you will see that the state of Ohio is between all of the major port cities on the East Coast north of Tidewater Virginia and the cities of Chicago, St. Louis, and Detroit, as well as most of the port cities on the West Coast. Only traffic to/from from C a n a d a a n d Chicago through the state of Michigan, and traffic to/from Los Angeles and the East Coast by way of Memphis can avoid passing through the Buckeye State.



A Brief Look at Industries Related to Ohio Railroading

Perhaps no state in the Union has such a diverse industrial base as does the State of Ohio. The presence of coal, limestone, and a smattering of iron ore in the soil fed a fledgling iron industry in Southern Ohio in the early 19th century. Ceramic and pottery kilns sprouted through the Ohio River Valley from East Liverpool to Marietta at the same time. Along with agricultural interests and town

(Continued on page 7)

(Continued from page 6)

merchants, these industries were among the strongest customer base of the Ohio canals and of the early railroads.

The fact that the carriage industry was located in Detroit, Michigan, just 50 miles north of Toledo, played a very important role for Ohio industries and railroads in the first decades in the 20th century: it was the carriage industry that morphed into the automobile industry.

Everything that is needed to build and operate an automobile was in easy reach within or through Ohio; countless finished products and raw materials that were mined, refined, forged, assembled, and transported to market *had* to be delivered by rail or ship or barge. Of course, trucking assumed many of these duties once the Federal Highway system was established, but the point-to-point routes that they enjoyed were primarily based on the mines, mills, and markets that had been secured by the railroads 50 years earlier.

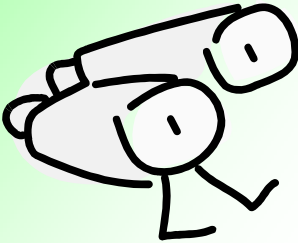
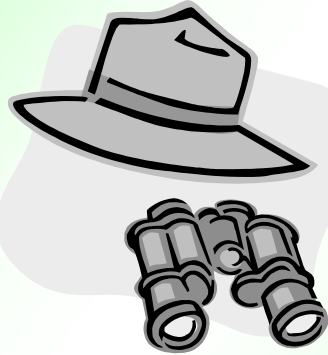
Today, loads as varied as yummy Beef Tallow (shipped in insulated bottle cars...we hope) and Corn Syrup support the food industry. Petrochemicals and Carbon Black flow to chemical plants. And lest we forget, coal from Kentucky, West Virginia, and Pennsylvania rolls through Ohio in unit trains bound for Michigan, Indiana, Illinois, and Ohio steam generating power plants.

Our “Annual Swap Meet”, is now available at every meeting!

If you have surplus engines, buildings, rolling stock, modules, etc., bring them to any of the meetings to offer great deals to your fellow members.

Next Month's Meeting

We're looking for a place to hold the May meeting.



Want to volunteer?



Event Planner

Venue	<i>Railfest</i>	<i>Dates</i>	<i>Event times</i>
Set up	Friday	3/19/05	Starts 7:00 p.m.
Oper.	Saturday	3/20/05	10 a.m.—4 p.m.
	Sunday	3/21/05	10 a.m.—4 p.m.
Tear Down	Sunday	3/21/05	4:00 p.m.

Venue	<i>NMRA MCR Regional Convention</i>	<i>Dates</i>	<i>Event times</i>
	Thursday	5/12/05	T.B.A.
	Friday	5/13/05	T.B.A.
	Saturday	5/14/05	T.B.A.
	Sunday	5/15/05	T.B.A.



Looking for LENS “gear”?

Contact Karen
(440-347-0938)

to order your
favorite items. Quality, prices &
selection to fit every budget!



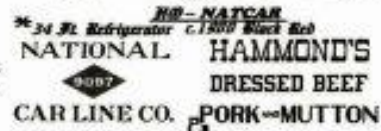
“web.page”

Decals (continued from Feb., 2005)

We will finish our tour of lesser known decal manufacturers. First up is Art Griffin Decals:

www.greatdecals.com/Griffin.htm

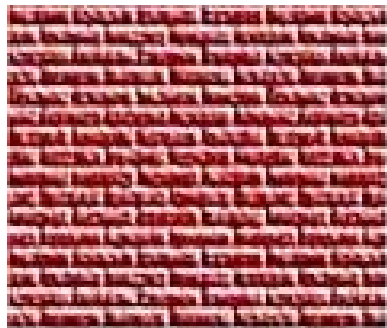
His decals cover the 1880's through the 1930's and are taken from actual photographs. Here are some examples (note: although the picture says HO, he also makes N as well as other scales.):



Next is Mad4Trains, a manufacturer of “decals skins.” They are found at:

www.mad4trains.com/n-scale-skins.htm

What are decal skins? These are decals to cover the entire side of a car or building. Shown below are some samples:



Next is Oddball Decals at:

www.oddballd decals.org

Here you will find a growing number of decals, many from the Midwest, covering steam to modern subjects. Two samples are below:



Lastly, I would like to mention a company I have used several times. They produce custom decals in white, as small a run as one half sheet, based on Word files that I email. You can find ELS Trains at:

<http://home.mindspring.com/~elstrains/index.html>

Visit our web site at www.geocities.com/lensohio/

“F.R.E.D.”



See you at the next station!