



Monthly publication of the

# Lake Erie "N" Scale Society

*"L.E.N.S."*

Aug, 2005

**News and Opinions  
Monthly Meeting Info  
Web Sites of Interest  
Learning from Prototypes  
Show Schedules  
and more!**

**N-TRAK**  
N SCALE MODULAR RAILROADING

## Welcome!

LENS is a group of people with a common interest in modeling N scale railroads using the "NTRAK" modular concept.

Any time we meet and/or display our work and promote this hobby, we would love to have you join us.

This means that ALL of us have chances to participate in the hobby by helping with any or all of the following:

**Setting up / tearing down**  
**Running trains**  
**Sharing your knowledge**  
**Learning something new**  
**Answering questions**  
**Hosting a meeting**

Notice that NONE of the above requires a module. We need your help... so bring yourself, your enthusiasm, your interest and your trains.

Thanks in advance for helping! Hopefully, we will continue to see you at the meetings and display events.

***Come and join in the fun!***

[www.geocities.com/lensohio/](http://www.geocities.com/lensohio/)

The Lake Erie N Scale Society newsletter is published monthly for the sole use of its members by a crew of volunteers.

Opinions published here are solely those of the editor and/or the members of the Lake Erie N Scale Society.

This publication is intended to be a monthly newsletter describing the business, events and the common interest in N scale model railroading enjoyed by the members of the Lake Erie N Scale Society.

**For information or questions regarding our Society, you may contact Dennis Lloyd at 440-352-7081 - or - (dlloyd@apk.net)**

Meetings normally start at 8:00 p.m., the fourth Friday of each month.

# Lake Erie N Scale Society

Aug, 2005

## KSONS WOULD LIKE YOUR HELP!

I received a letter from Paul Downs of the Kentucky Society of N-scalers (KSONS) explaining a program they are attempting to put together, which will enable them to host the 2008 National N Scale Convention in Louisville, KY.

In order to secure space in the Kentucky International Convention Center, they need to put down a \$5068. deposit (25%). Their treasury (like ours) is a little short of that amount.

They are proposing a financial partnership with clubs and/or individuals in order to raise the needed funds. Their intention is to return all of the money at the successful conclusion of the convention. If there is a profit, a portion of that will be shared with the financial partners.

At the last meeting, those present elected to send \$100. dollars from our treasury to the cause. Someone suggested that individuals also contribute. ***I have proposed we send a check for all of the monies we raise to Paul (KSONS) on Monday, Aug. 29th.*** That deadline is very close...

Everyone that receives e-mail should have received a full copy of the proposal from Paul for your review. If you have any questions, or if you wish to contribute, contact Denny L. or Lou D.

## Last Month's Meeting

July's meeting was held at the home of Robert T. outside in the backyard. We were treated to a tour of three G Scale layouts that he has (2 operating & 1 under construction).

Robert has an extensive G scale collection as well as an interest in N Scale. He has been working with LGB for many years and occasionally sets up "one man" shows for retirement homes, parties, etc. This is one of those "hidden treasures" operated by a member of our group.

We discussed the LENS layout tour and its success, future

l a y o u t  
venues, the  
state of our  
treasury and  
our group in  
general, a  
p r o p o s a l  
regarding an  
N s c a l e  
convention  
being planned  
for Louisville  
in 2008, and  
what we can



do to find more opportunities to display our modules.

We also reminded people about the Railfan Tour of SW Pennsylvania scheduled for Saturday, September 10th.

Cover Photo: LGB Beyer-Garrett (German prototype)

## This Month's Meeting

### Annual Family Picnic *Saturday, August 27, 2005*

We are going to try something a little different this year. Our annual picnic is going to start earlier in the day so we can provide games for the families, followed by the "usual" cookout / pot luck format.

The venue this year will be the pavilion at Big Creek Park (a map will be provided). There is a baseball diamond and plenty of space for games and entertainment like Frisbee and horseshoes. After people are completely worn out, we will move to the pavilion for dinner.

You will need to bring something to grill, something to share, plates and utensils, and a beverage. Also bring Frisbees, baseball gloves / bats / balls, footballs, or anything else you think will entertain the attendees.

- ◇ 3:00 p.m. Picnic / games begin
- ◇ 6:30 p.m. BBQ coals will be ready
- ◇ 7:00 p.m. "Pot luck" dinner served

Past picnics have always been enjoyed by those in attendance and has become the traditional social event for LENS members and their guests. This event replaces the monthly meeting.

**Please note the day is the fourth SATURDAY of the month.**

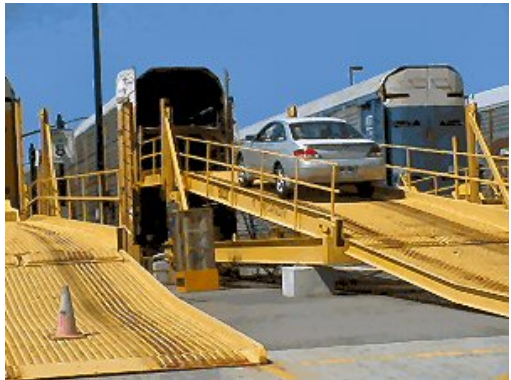
***Join us whenever you can during the day!***

## Learning From Prototype

### How are Auto Racks loaded?

When automobiles were still new technology, they could be shipped in [boxcars](#) .As automobiles grew in size, railroads found that they needed to modify the boxcars for more efficient loading.

In the [1940s](#) and [1950s](#), some railroads experimented with automobile loading assemblies that would lift one or more automobile above others within a boxcar. The success was limited due to their special use and specific size; it proved uneconomical to maintain a fleet of these assemblies.



By this time, in the US, most circuses still traveled by rail. They were major haulers of wheeled vehicles, carrying them on [flat cars](#). The circus solution was to use a string of flat cars. A ramp was placed at the end of each car and bridge plates spanned the gaps between; the road vehicles were driven or towed up onto one car and then driven or towed down the train. This became known as the circus style.

In the [1960s](#) railroads took the clue from circuses and started using this manner. But, loading automobiles onto

*(Continued on page 7)*

(Continued from page 6)

one flat car left a large amount of unused space above the vehicles. The solution was to take the assemblies used to stack and load vehicles within boxcars and attach them to the flat



cars. The assemblies, called racks, created two levels on which automobiles could be loaded. Foldaway bridges were added to the ends of the flat car decks to allow the vehicles to be driven the entire length of a train. The railroads no longer needed specialized equipment to load and unload the racks in boxcars. All they needed now was a ramp at the right height.

During the 1960s, specially built auto carriers took over rail transportation of newly completed automobiles. Specialized terminals were developed and autoracks were built in three-level configurations. Side sheathing was added in the 1970's and roofs were added in the 1980's.

Reference the following web sites for complete details:  
[www.absoluteastronomy.com/encyclopedia/a/au/autorack.htm](http://www.absoluteastronomy.com/encyclopedia/a/au/autorack.htm)

<http://web.linux.ca/pedia/index.php/Autorack>

***Our "Annual Swap Meet", is now available at every meeting!***

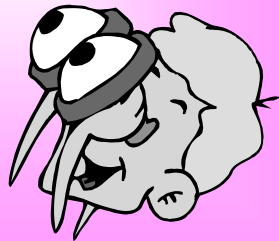
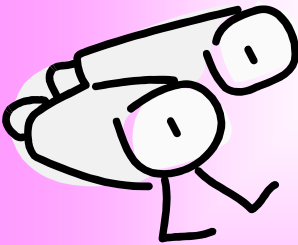
If you have surplus engines, buildings, rolling stock, modules, etc., bring them to any of the meetings to offer great deals to your fellow members.

## Next Month's Meeting

*We're looking for a place to hold the September meeting.*



*Want to volunteer?*



**Stewart's Hobbies &  
Collectors' Toys**

38033 Euclid Ave.

**440-942-6632**

Microtrains Dealer

*You've seen Rob & Sandy at Railfest — why not visit their*



## Event Planner

Venue	<i><b>LENS annual picnic</b></i>	<i><b>Dates</b></i>	<i><b>Times</b></i>
<b>BIG</b>	Lawn games, etc.	8/27/05	3 p.m. - 6 p.m.
<b>CREEK</b>	Coals ready !!	8/27/05	6:30 p.m.
<b>PARK</b>	“Pot luck” dinner	8/27/05	7:00 p.m.

Venue	<i><b>Burton Library</b></i>	<i><b>Dates</b></i>	<i><b>Times</b></i>
<b>Set up</b>	Friday	11/25/05	1:00 p.m.
<b>Operate</b>	Saturday	11/26/05	9 a.m.—5 p.m.
<b>Operate</b>	Sunday	11/27/05	1 p.m.—5 p.m.

Venue	<i><b>FarmPark</b></i>	<i><b>Dates</b></i>	<i><b>Times</b></i>
	( To be announced )		

### Looking for LENS “gear”?



Contact Karen (440-347-0938) to order your favorite items. Quality, prices & selection to fit every budget!



[“web.page”](#)

**Railfan trip to Southwest PA—September 10th**

One of our members has been working hard to plan a Railfan trip to southwestern PA. Here is an excerpt from a recent e-mail:

*“During one of our past meetings, the suggestion was brought up about holding a 1-day railfanning tour of southwestern PA. I have volunteered to lead this charge and would like to poll the membership about the general format for such a trip. My preliminary thoughts are:*

- \* Meet on Saturday AM, September 10th.*
- \* Travel to the CSXT New Castle yard and observe what's happening.*
- \* Move over to Homewood and watch NS action.*
- \* Make our way south to Beaver where we can observe the Conway Yard and CSXT action. This is a very busy yard and there are numerous good spots to watch trains both north, east and west of the yard.*

*Anyone interested could make a side trip to Neville Island to view some steel and chemical industry, although I'm not sure if any rail activity will be present. We could enjoy a picnic dinner at the City park along the NS tracks at Beaver before heading home.”*

*(Continued on page 11)*

(Continued from page 10)

( from a later e-mail...)

*"I've been working with Terry Stuart of the FALLSTON FLAGSTOP Railfan B&B, who will let us use his B&B to railfan during our lunch stop. For a cost of \$6, we would be provided with a cold box lunch and beverage.*

*Since the turnout is rather light to date, dinner plans would be your own although I'm still planning to stay late at the Beaver park and watch trains until dusk then head home. I have told Terry that our tentative date will be September 10th as his B&B books fast."*

Ken S. also mentioned that some folks may wish to stay at the Falston Flagstop



B&B overnight, rather than traveling back home. If that is of interest to you contact Terry Stuart at the B&B (724-843-7023) for reservations.

Either call or write to Ken S. if you are interested in this trip so he can coordinate travel. Depending upon how many people are interested, we should be able to ride in one or two vehicles to save on the cost of transportation.

Visit our web site at [www.geocities.com/lensohio/](http://www.geocities.com/lensohio/)

**“F.R.E.D.”**



*See you at the next station!*

Copyright 1999-2005 The Lake Erie N Scale Society

[www.geocities.com/lensohio/](http://www.geocities.com/lensohio/)