

Monthly publication of the

Lake Erie "N" Scale Society

"L.E.N.S."

OCT., 2006

News and Opinions
Monthly Meeting Info
Web Sites of Interest
Learning from Prototypes
Show Schedules
and more!



Welcome!

LENS is a group of people with a common interest in modeling N scale railroads using the "NTRAK" modular concept.

Any time we meet and/or display our work and promote this hobby, we would love to have you join us.

This means that ALL of us have chances to participate in the hobby by helping with any or all of the following:

Setting up / tearing down
Running trains
Sharing your knowledge
Learning something new
Answering questions
Hosting a meeting

Notice that NONE of the above requires a module. We need your help... so bring yourself, your enthusiasm, your interest and your trains.

Thanks in advance for helping!
Hopefully, we will continue to see you at the meetings and display events.

Come and join in the fun!

www.geocities.com/lensohio

The Lake Erie N Scale Society newsletter is published monthly for the sole use of its members by a crew of volunteers.

Opinions published here are solely those of the editor and/or the members of the Lake Erie N Scale Society.

This publication is intended to be a monthly newsletter describing the business, events and the common interest in N scale model railroading enjoyed by the members of the Lake Erie N Scale Society.

For information or questions regarding our Society, you may contact Dennis Lloyd at 440-352-7081 - or - (dennis.lloyd@comcast.net)

Meetings normally start at 8:00 p.m., the fourth Friday of each month.

Oct., 2006

Did you know...

In Britain, some N scale models are built to "2 mm scale" for "2 mm to the foot" which calculates to a 1:152 proportion. Early N scale was also known as "OOO" or "Treble-O" in reference to O and OO scales and was also 1:152, though for an entirely different reason.

Although trains and accessories of similar gauge and/or scale existed as early as 1927, modern N scale only appeared in 1962. Unlike other scales and gauges, which were de facto standards at best, within two years N scale manufacturers defined the gauge, voltage, as well as the height and type of couplers.

N scale has a large worldwide following. Models are made of very many standard gauge prototypes from every continent. N scale's popularity is second only to HO scale in popularity. In Japan, where space in homes is more limited, N scale is the most popular scale, and HO scale is considered large. Not all modellers select N because they have small spaces, some use N scale in order to build more complex or more visually expansive models.

Last Month's Meeting

We wish to thank Robert T. for offering to host the September meeting and giving up a vacation day to do so. This was to be an outdoor meeting, where we would have an opportunity to view Robert's "G" scale layout in spite of the bugs (from the flooding this year), the cold weather and the early darkness. However, as it turned out, there was a family emergency and we moved the meeting to the local Denny's Restaurant at the last minute. Robert told me he will try again next summer when conditions are better.

It was encouraging to see two guests at the meeting. Both gentlemen have been involved in model railroading for some time, but came to see what the N-trak modular concept was all about. There was a lively discussion regarding the different phases of the hobby and why and how the modular concept originated.

Many questions were asked and answered, and I don't even think we scared them away! In fact, one of the guests made arrangements to take over ownership of the module that Bob A. offered to give to an interested party. It will be nice to see the amusement park module active again.

Matt K. announced that he donated his 3 modules to the Western Reserve Model RR Museum for inclusion in their N scale section. Those very popular modules will be missed at our local displays.

Bonnie L. asked for volunteers to provide "clinics" and to open their home layouts in conjunction with the "Promotional Day" at the Western Reserve Model RR Museum, on Saturday, Nov. 4, 2007 (10 a.m. to 6 p.m.). The museum is located 1/2 mile east of state route 306 on the north side of Tyler Blvd.

This Month's Meeting

Our meeting this month will be held at the home of Charlie T. in Eastlake, OH. (map provided with the meeting announcement). The meeting will start at 8 p.m. on the fourth Friday of the month (10/27).

Charlie has been busy recovering from the flood that ravaged northeastern Ohio this summer. He was away during the storms and was not able to “defend” his layout, although I understand it stayed high and dry. The same can't be said for the driveway to his house, as the culvert in front washed away and he found the contents of the basement floating around the legs of his layout.

We will be discussing the planning for next month's set up at Burton. We have been invited to join Bob V. at the library, where he will be setting up his collection of modules. If you are not able to attend this meeting and wish to set up at Burton, please contact Denny L. to be placed on the roster.



Additionally, we will need to discuss plans for the layout at the Farmpark in December, as well as try to determine where else we can set up our display.

Do you remember the “build a layout” project? The module that we are building as a teaching aid will be at the meeting. We will demonstrate a method of how to add ballast to the tracks.

Learning From Prototype

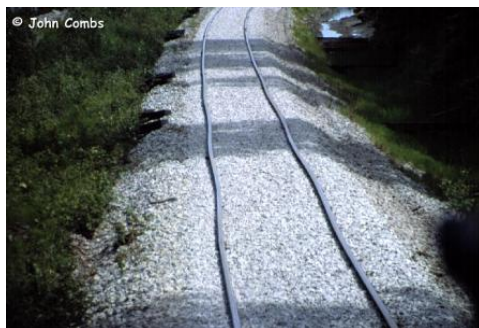
Miscellaneous facts from the Alaskan Railroad

Question: Does the Alaska Railroad ever haul autoracks?

Answer: Yes, the autoracks only show up sporadically and appear to only come on the CN barges. A while back, when SeaLand and TOTE had union contract problems in Seattle, one dealer (at least) decided to send his trucks and cars to Alaska via the CN barge, as Seattle was tied up with the strike. This seemed to work well for the dealer and they continue to get new vehicles this way. They do get mostly trucks. You will see many different road names such as CN, ATSF, BN, Conrail, DRGW, CP and CSX autoracks.

Question: What are sun kinks?

Answer: A section of rail that elongates and bends out of alignment due to heat expansion. Here are two photographs of sun kinks along the Alaska Railroad.



Question: How many moose were killed in a single day by one locomotive?

Answer: "An Alaska Railroad freight train on a run between Anchorage and Fairbanks hit and killed twenty-four moose in a single night. I've been here fourteen years and I can't

(Continued on page 7)

(Continued from page 6)

remember anything like it," said Arnold Polancheck, assistant general manager of the railroad. "Normally you hit one or two on a trip."

Question: Does the Alaska Railroad heat their fuel tanks?

Answer: EMD engines by their nature heat their fuel tanks. Fuel is fed to the injectors at a rate much higher than what they need, the excess being used to cool them. This hot fuel is then dumped back into the tank, warming it. Even the Florida East Coast's engines work that way. The Alaska Railroad does have fuel oil preheaters which are thermostatically controlled heat exchangers that use cooling water to heat cold fuel after it leaves the fuel pump and before it goes to the injectors. Furthermore, their batteries have built in heaters. This feature is unusual, but it is not unique to the Alaska Railroad. The only protection they have for the cooling system is the winterization hatch. EMD engines cannot have antifreeze in the cooling water. They are too prone to leakage and coolant in the lube oil (a common problem) would be catastrophic to the silver wrist pin bearings if that coolant contained antifreeze. And speaking of the lube oil, no heat is provided. In applications where oil pan heaters are used, it is for the purpose of reducing wear at the time of cold start. EMDs cannot be started cold. It's the nature of the beast.

Our "Annual Swap Meet", is available at every meeting!

If you have surplus engines, buildings, rolling stock, modules, etc., bring them to any of the meetings to offer great deals to your fellow members.

Next Month's Meeting

The November meeting is usually replaced by a set up of our display at the Burton, OH Library. This year, we have been invited to join Bob V., who will be setting up his display (he has several modules of his own) on the second floor in the meeting room.

Our group has been providing a modular layout for the citizens of Burton for almost thirty years. It has become a part of the tradition of the town to see us there to help kick off the holiday season. Although many years ago, the whole town came out to sing carols, eat pancakes, and enjoy the season, about the only thing that hasn't changed since then is we are still there running model trains.

Bob V. lives in Burton and acquired the current venue for the layout. He has continued to build module after module, so he now has enough to set up his own display. Since some of our "regular" modules have been donated to a local model RR museum or retired, the combined layouts should provide a very nice display.

The other tradition that we have is to meet at Belle's Restaurant (a local favorite next door) for pie. This is a nice opportunity to meet with the fellow members of LENS in a social setting. We hope you can join us for the set up. The more "hands" available, the sooner we get to the pie!

Stewart's Hobbies & Collector's Toys

38033 Euclid Ave.

440-942-6632

Microtrains Dealer

You've seen Rob & Sandy at Railfest — why not visit their store in Willoughby when you get a chance

Event Planner

	Burton Library	<i>Dates</i>	<i>Times</i>
Set up	Friday	11/24/06	1 p.m.
Event	Saturday	8/22/06	9 a.m. - 5 p.m.
Event	Sunday	8/26/06	1 p.m. - 5 p.m.

	FarmPark	<i>Dates</i>	<i>Times</i>
Set up	Sat. (day time)	Dec./06	
Event	Saturday	Dec./06	
Event	...thru Friday	Dec./06	

	Louisville "N" Convention	<i>Dates</i>	<i>Times</i>
Set up	Wednesday	6/25/08	TBA
Operate	(from) Thursday	6/26/08	TBA
Operate	(thru) Sunday	6/29/08	TBA

Looking for LENS Apparel?



Contact Karen **(440-347-0938)** to order your favorite items. Quality, prices & selection to fit every budget!



“ web.page ”

The folks at ***Absolute Background Textures*** archive provide free textures for use as building papers. Not only can you choose the texture, but also the color and brightness of the texture and the size of the objects (brick, stone, cement blocks, etc.) Below are some samples from the website at www.grsites.com/textures/.

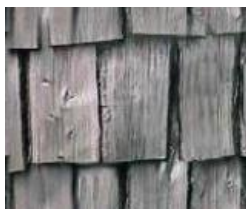
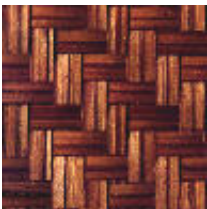
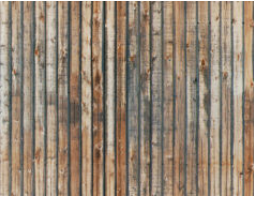
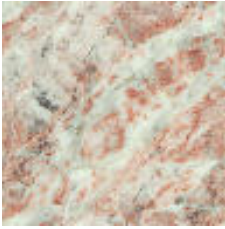


I know, the brick style you want isn't here. Maybe it is on the other 6 pages of brick textures.

Following, are some samples of other textures:

(Continued on page 11)

(Continued from page 10)

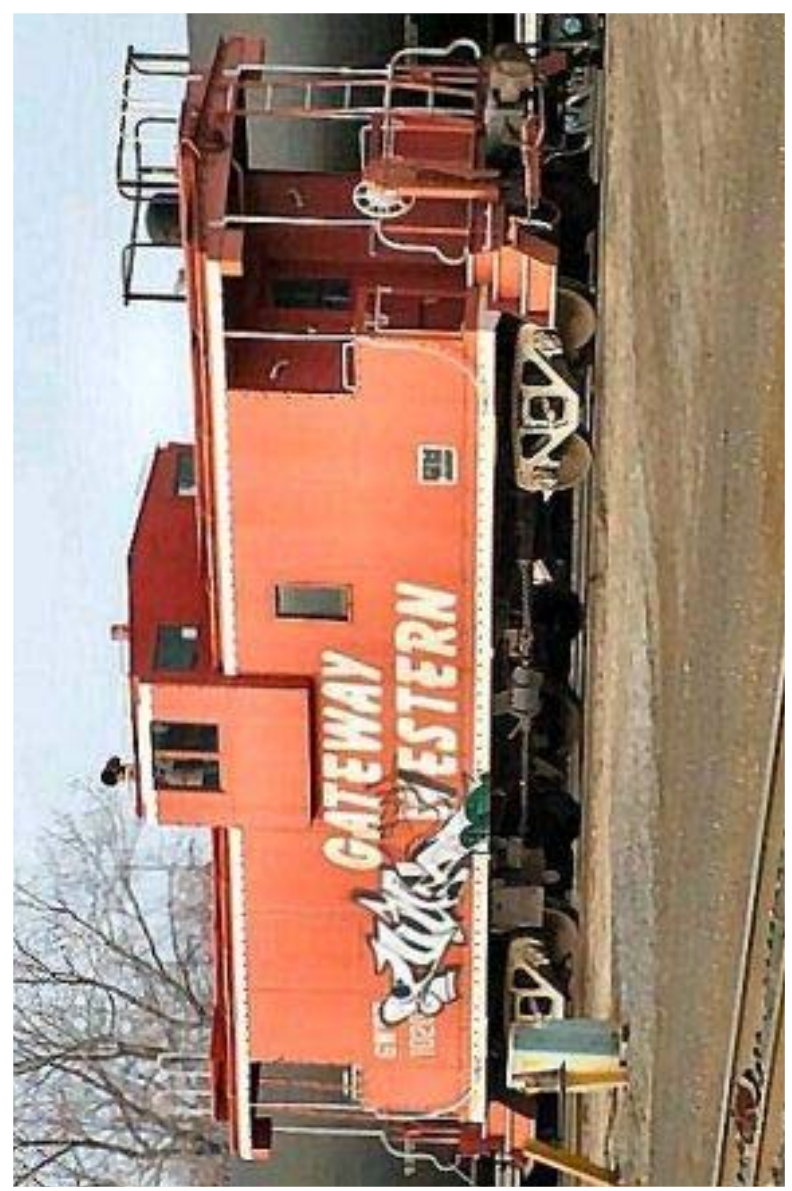


Remember, these can be printed in full sheets. The illustrations above are samples.

For a full sheet, try this: www.grsites.com/exec/public/tilecolor.cgi?fn=brick007&ext=jpg&dir=brick&location=&color=663333

Visit our web site at www.geocities.com/lensohio/

“F.R.E.D.”



See you at the next station!

Copyright 1999-2006 The Lake Erie N Scale Society

www.geocities.com/lensohio/